

Cementing - Adhesive pad, Model 202

Main Characteristics

- Permanent mounting in corrosive environment
- For industrial top connector accelerometer
- Stainless steel (AISI 316L)

Description

Cementing pads are used for permanent installations. It eliminates tapping into the structure but provide high frequency capability approaching stud mount. The pad is epoxied in place of the tapped hole; the sensor is then mounted to the pad. Cementing - adhesive pads can provide additional electrical isolation. Adhesive selection is critical for long term reliability. Our cemented pads feature a flat abraded mounting surface for superior bonding and a stud (M5, 10-32 UNF, M6 or 1/4" 28 UNF) for mounting the accelerometer.

Ordering information

To order, specify part number, options and suffix :

202.01- AA - BB - C

AA : Sensor thread

- 05 - M5x0.8
- 15 - 10-32 UNF
- 06 - M6x1
- 16 - 1/4" 28 UNF

BB : Hexagonal

- 13 - 13 mm
- 19 - 19 mm
- 22 - 22 mm

C : Material

- 2 - AISI 316L

Stocked models :

202.01-06-22-2 / 202.01-16-22-2

Ordering example

202.01-06-22-2 Adhesive pad, M6, AISI 316

Specifications

Environmental

Temperature depends on adhesive

Physical

Dimensions See outline drawing Fig 1a

Weight 202.01-X6-22-2 17 gr (0.60 Oz)

Material Stainless steel AISI 316L

Accessories

Adhesive Loctite 330

Competitors cross reference list

Wilcoxon SF8, SF8-2 / CTC online MH130-1A, MH133-1A / AMPO ERD20 (not stainless steel)



Model 202.01-06-22-2

Outline drawing

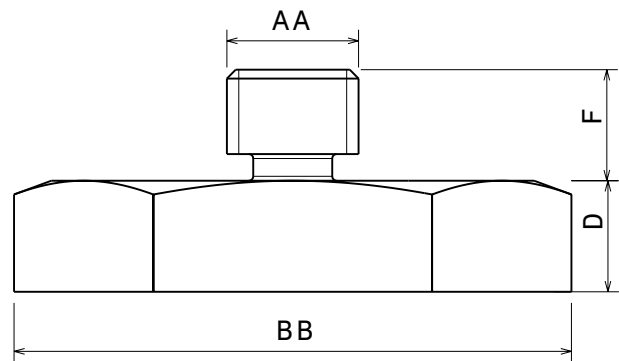


Fig 1a

Model	F (mm)	D (mm)	Application
202.01-06-22-2	3.2	3	Model 101, 105
202.01-16-22-2	4.3	5	101, 105 with H7 option

Mounting drawing

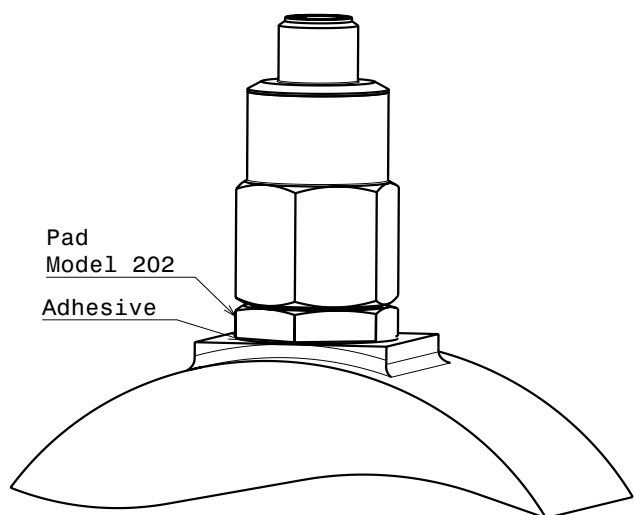


Fig 2a